

SUPPLEMENT

6360006

This supplement is for your EuroDrink Operator's Guide, part number 6360002. Please proceed as follows:

1. From your EuroDrink Operator's Guide, remove pages i/ii and 33/34.
2. Insert pages i/ii and 33/34 from this supplement into your manual.
3. Insert appendix D and appendix E from this supplement into your manual.



TABLE OF CONTENTS

TAR I F O F C O N T E N T S

Specifications 2

Initial Setup 4

Major Parts 6

Controls and Indicators 10

Adjustments and Minor Maintenance 17

 Set up the Coin Mechanism 17

 Empty the Bill Stacker 17

 Install the Water Filter Cartridge 18

 Cup Mechanism Adjustment 20

 Loading the Cup Mechanism 21

 Install the Optional Coin Box Lock 23

 Adjusting Water Valves 23

 Filling and Installing Canisters 24

 Setting up the Menu Assembly 25

 Loading Optional Filter Paper 26

Programming the Eurodrink 28

 Orientation 28

 Getting Around 28

 The Service Keypad 28

 The Selection Switch Panel 28

 The Display 29

 The Keys 29

 Summary 32

 Programming Flowcharts 34

Machine Configuration 42

Product Configuration 45

 Setting Throws 51

 Collecting Dry Product Gram Throws 52

 Dry Product Weight and Throw Time Factory Default Settings 53

 Caffé Latte Recipe 59

 Collecting Water Throws 60

 Water Throw Default Times and Volumes 61

Pricing 62

 Set Prices for Individual Selections 62

 Set One Price for the Entire Machine 63

 Set Prices for All Regular Cups 64

 Set Prices for All Large Cups 65

 Set Prices Using Price Lines 66

Time of Day 67

 Time Interval Editing 69

 The End of Message Character 71

 Custom Message Editing 71

 The Character Set 72

Test Machine Functions 73

Payout Coins 76

Free Vend 77

Data 78

 Data Available for Viewing 78

 Viewing Data Items 80

 Clearing Data 81



Diagnostics 82
Setting the Supervisor Options 84
View Machine Information 86

Sanitation 87

Appendix A. Initial Set-up Guide A1
 I. Power Requirements A1
 II. Water Requirements A1
 III. Positioning the Merchandiser A2
 IV. Final Installation A2

Appendix B. The Free Vend Keyswitch B1

Appendix C. The Infrared Mug/cup Sensor C1

Appendix D. DEX/UCS Interface Operation D1

Appendix E. The Optional Printer E1

Index Index - 1



- Perform TEST VENDS
- Fill water tank
- Test various machine functions:
 - Displays
 - "DRINK BEING SERVED" lamp
 - Cup mechanism
 - Automatic delivery door
 - Whippers
 - Grinder(s) (if so equipped)
 - Air compressor (if so equipped)
 - Brewer (if so equipped)
 - Bowl rinse system
 - Brewer rinse system (if so equipped)
 - Mug sensor switch (if so equipped)
 - Freevend key switch
 - Water tank level switches
 - Waste pail switch
 - Cup ring switch



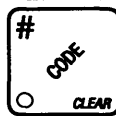
- Pays one or more coins



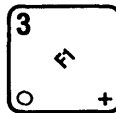
- View resettable and non-resettable VEND AND SALES TOTALS
- View or set MACHINE ID
- CLEAR resettable vend/sales counters
- View individual SELECTION data



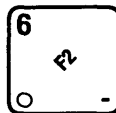
- Allows you to see any fault or condition that may place the machine out of service



- Enter code to start SUPERVISOR mode
- Set up SUPERVISOR options
 - Set SUPERVISOR code
 - Set FREE VEND code
 - LOCK/UNLOCK programming modes
 - Select whether to show or hide certain DATA items



- Displays the following information:
 - Current water tank temperature
 - Software version number
 - Machine configuration
 - Selection configuration
 - Cup only setup
 - Whipper configuration
 - Automatic vend door configuration



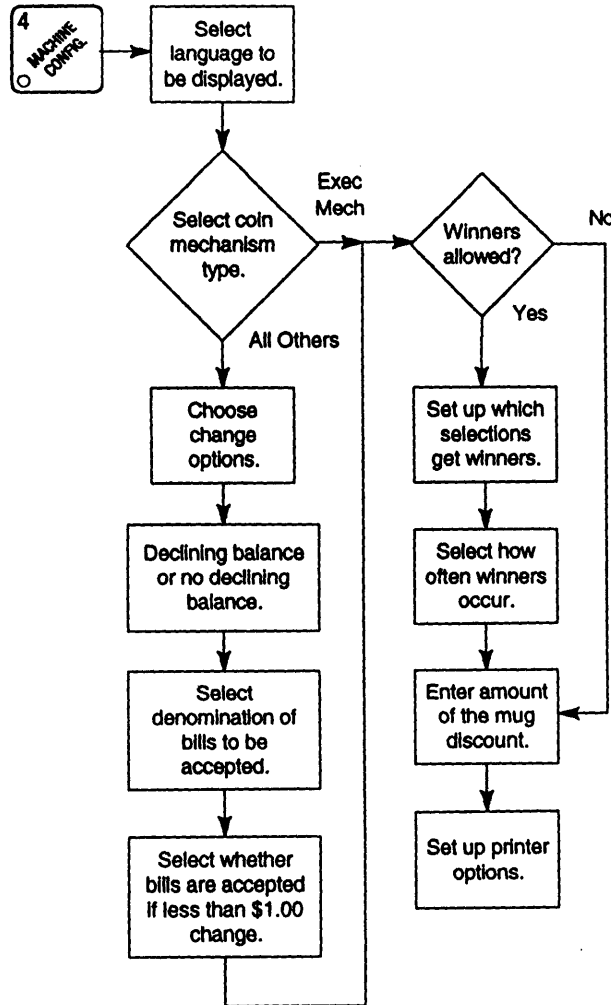
- Downloads machine information into a portable data collection device via the DEX/UCS interface.



PROGRAMMING FLOWCHARTS

Programming Flowcharts

The flowcharts on the following pages will provide you with a "map" to the different programming features of your machine. Once you are familiar with the detailed programming steps given later in this section, you can use the flowcharts as a shortcut. Each chart begins with the key you will use to access those steps. Follow the lines and arrows from one step to another. A rectangular box contains the functions or tasks you will perform at that point. A diamond shaped box is a decision statement. For example, look at the MACHINE CONFIGURATION chart, below. At one point, you are asked to choose between an EXEC coin mechanism and all others. Depending upon your decision, you will take a different path. Note that choosing any mechanism except an EXEC gives you several more steps to perform before you get to the WINNER option.






APPENDIX D. DEX/UCS INTERFACE OPERATION

Connect your portable data collection device (PDCD) to the harness hanging inside the monetary door, and operate it per its instructions.

SELECT DATA TRANSFER METHOD:

1. Press . The display shows: *ENTER CODE*. You must enter the four-digit supervisor code within 6 seconds to gain access.

NOTE

A new machine has a factory-set supervisor code of 0000.

When you have entered the right code, you will hear two beeps and see *SUPERVISOR* in the display.

2. Press  until the display shows *DEX.CLR ON* or *DEX.CLR OFF*.

DEX.CLR ON = Data will be cleared after collection is complete.

DEX.CLR OFF = Data will remain in merchandiser memory after collection is complete.

3. Press  to switch between the two options.

4. Press  to exit.

This procedure does not need to be repeated unless you desire to change the data transfer option. However, it might be prudent to check the setting prior to download to ensure unintentional clearing of data.

DOWNLOAD DATA:

1. Press . The display shows *DEX.MODE* while data is being transferred.

**APPENDIX E. THE OPTIONAL PRINTER**



The printer allows you to obtain a hard copy of data from the Hot Drink Center. This data includes:



- Machine ID number
- Time and date of printout
- Price of each selection
- Mug discount
- Product configuration information
 - Basic machine configuration
 - Cup sizes
 - Product and condiment throw times
 - Water, steep, and air compressor timing
- Dollar value of sales for all selections
- Sales counts for all selections

Printing is very simple:

1. Open the machine door and locate the printer cable. (You may need to open the monetary panel.)
2. Make sure the baud rate selected in the MACHINE CONFIGURATION function agrees with your printer's baud rate.
3. Connect the printer to the printer cable.
4. Turn the printer power ON.
5. The display shows **PRINTER**. You are now in the printer mode.

NOTE

Pressing  causes you to leave the printer mode. To reenter printer mode, press  while the printer is connected and turned on.

6. To print all prices, press . The printer begins printing. the machine display scrolls " ** " until the data has been downloaded, then it returns to **PRINTER**. The printer may continue printing for a while longer.
7. To print product configuration, press . The printer begins printing. the machine display scrolls " ** " until the data has been downloaded, then it returns to **PRINTER**. The printer may continue printing for a while longer.